

RJHG1

Goods Only Lift



LIFT INSTALLATION

RJHG1

Goods Only Lift

Designed for high levels of goods movement between floors - such as industrial installations, department stores, shopping centres & supermarkets.

The RJHG1 Goods Only Lift is designed to work intensively and reliably, for years.

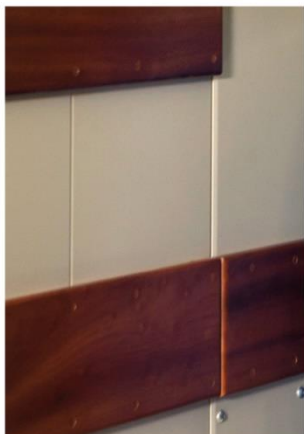
This is not a passenger lift. No persons should travel in the lift with the goods.



Load capacity	500kg, 1000kg, 1500kg, 2000kg
Rapid Installation	No major construction work; 10 - 12 weeks from placing your order to installation
Free standing Structure	No machine room, no pit, no shaft headroom
Energy efficient	Significantly lower energy consumption than conventional lift platforms
Optional Extra Adaptations	Buffer rails, kick plates, hardwearing aluminium or steel chequer plate finishes, manual or picket gates.....
EC Machinery Directive 2006/42/EC	Fully compliant



The geared traction motor is housed in the upper part of the modular structure.
No separate machine room needed.



The car interiors are finished with coated steel for hardwearing durability. Extra protection is available in the form of buffer rails and kick plates.



Loading ramp is all that is needed with the freestanding modular structure.
Alternatively, a 100mm pit can be built in lieu of a ramp.



RJHG1

Lift Specifications

Rated Load	200, 1000, 1500, 2000kg
Speed	0.15m/s
Drive system geared traction machine	VVVF speed regulator
Power supply	3 phase 380-400-415 Vac
Installation	Freestanding modular structure, RAL 9005 Black, Anchoring the structure to each floor is recommended.
Lift car	Built in steel plate, finished in RAL 7032 Beige <ul style="list-style-type: none">Floor finish is steel plate coated in RAL 7032 BeigeDirect fluorescent lighting Other finishes available on request
Entrance configuration	Single or open through at 180°
Landing doors	Manual single or double hinged with window. Finished in epoxy painted steel. RAL 9005 Black. UNE EN 81-58-2004 E120
Lift car door	The standard model is supplied without car doors.
Height of structure	Max 12m

RJHG1

Lift Specifications

Travel	Max 9m
Number of levels	4 levels
Guides length	5m
Minimum travel between floors with same entrance	2150mm (1800 car height + 350mm)
Minimum travel between floors with different entrance (0 to 180)	350mm
Minimum headroom	Lift car internal height + 700mm
Minimum structure headroom	Lift car internal height + 600mm
Pit	The standard package is supplied with a 100mm pit incorporated into the structure
Traction	Gearbox with 1 brake
Control system	APB call and send lift control system from landings

RJHG1

Lift Specifications

Landing operating panel	Push buttons with led Emergency stop push button
Shaft lighting	Direct fluorescent lighting
Lift car internal height	1800, 1900, 2000, 2100, 2200mm
Lift car width	From 1000mm to 2000mm in 100mm increments
Lift car depth	From 1000mm to 2000mm in 100mm increments
Minimum necessary lift shaft width	Lift car width + 470mm
Minimum necessary lift shaft depth	Lift car depth + 180mm

RJHG1

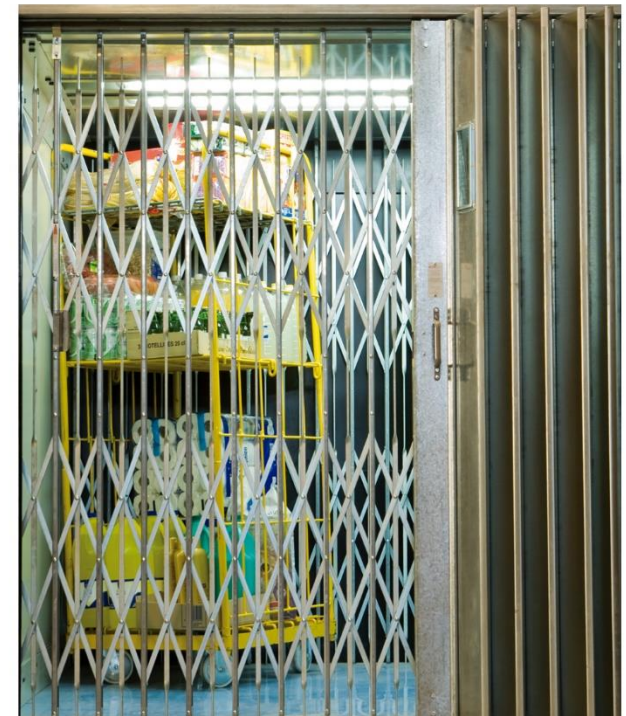
Lift Design Options



Standard lift landing doors



Optional lift landing folding doors:
manual shutter gates



Optional car folding doors:
manual picket gates

RJHG1

Lift Dimensions

Designed to take advantage of the available space, the widths and depths are entirely independent of each other. Any depth can be combined with any width across all the rated load capacities.

LIFT CAR				STRUCTURE	SHAFT	
Width	Entry Clearance			Car internal height	Width	Width
	No lift car door		Manual folding picket gate			
	Manual Shutter gate	Outswing				
1000	805	900	805	Car height	1404	1470
1100	905	1000	890	Car height	1504	1570
1200	1005	1100	970	Car height	1604	1670
1300	1105	1200	1070	Car height	1704	1770
1400	1205	1300	1155	Car height	1804	1870
1500	1275	1400	1235	Car height	1904	1970
1600	1375	1500	1335	Car height	2004	2070
1700	1475	1600	1420	Car height	2104	2170
1800	1575	1700	1500	Car height	2204	2270
1900	1650	1800	1600	Car height	2304	2370
2000	1750	1900	1685	Car height	2404	2470

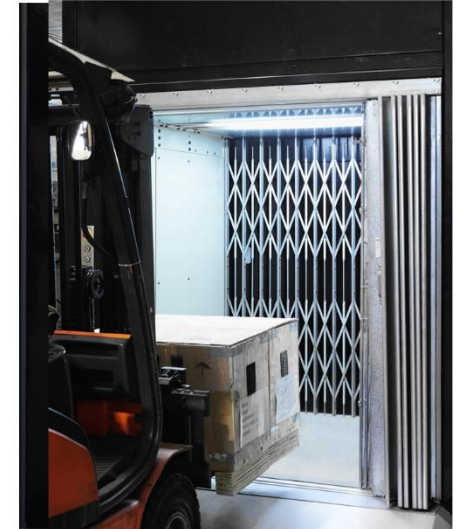
LIFT CAR			ESTRUCTURE	SHAFT	STRUCTURE	SHAFT
Depth	Entry clearance				Depth	Depth
	SINGLE ENTRANCE		OPEN THROUGH			
	Manual shutter gate	No gate	Manual folding picket gate	No gate		
1000	850	950	800	1000	1120	1180
1100	950	1050	900	1100	1220	1280
1200	1050	1150	1000	1200	1320	1380
1300	1150	1250	1100	1300	1420	1480
1400	1250	1350	1200	1400	1520	1580
1500	1350	1450	1300	1500	1620	1680
1600	1450	1550	1400	1600	1720	1780
1700	1550	1650	1500	1700	1820	1880
1800	1650	1750	1600	1800	1920	1980
1900	1750	1850	1700	1900	2020	2080
2000	1850	1950	1800	2000	2120	2180

When specifying a fully enclosed lift shaft, at the terminal landing, there must be 600mm clearance above the door opening to allow access to the maintenance trapdoor. On the other floors, the structural opening must be at least the lift car headroom + 180mm

We are happy to help with any queries you may have on specification.

Please note that dimensions can change without notice, so please check with our sales installation team before specification on 01782 342225.

Why Choose Us?



RJ Lift Services is a leading, national supplier of lift services & lift refurbishments to commercial and public sector organisations.

Our expert teams have years of experience in installing lifts throughout the UK. So why not call us for a quote?



0800 999 1177



sales@rjlifts.co.uk

www.rjlifts.co.uk

Great Service at a Fair Price

Advice from trusted experts

Dedicated team of experienced engineers

Nominated project manager

Project scheduling – so you know when your project will start – and finish

First class service from initial consultation to final signoff and handover of your new goods lift

All work carried out to the highest standards, designed to meet the agreed level of weights and size of goods.